

42H SERIES BALERS



KEY FEATURES

<u>HOPPER OPENINGS:</u>	49.5" X 40.5" UP TO 71.5" X 40.5"
<u>RAM FACE PRESSURE:</u>	UP TO 108 PSI
<u>CYCLE TIME IN SECONDS:</u>	AS FAST AS 8.6 (NO LOAD)
<u>MAXIMUM WEIGHT OF BALER:</u>	31,000# (NO LOAD)



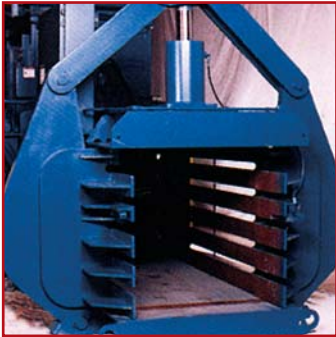
AMERICAN BALER COMPANY

PH: 419.483.5790

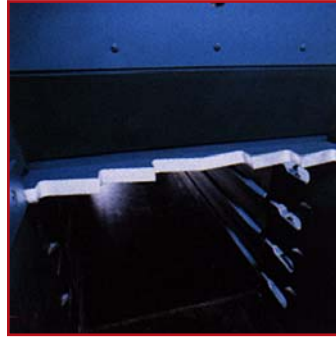
BELLEVUE, OHIO

EMAIL: sales@americanbaler.com WEB: www.americanbaler.com

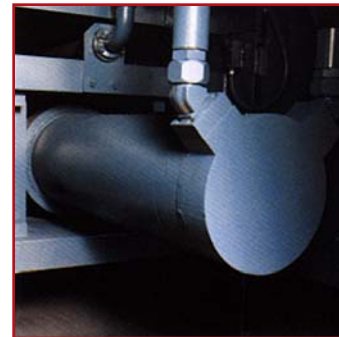
SPECIFICATIONS 42H SERIES BALERS



Slick material tension chamber self-adjusts to different materials for jam-free operation.



Three-stage replaceable shear often eliminates the need for pre-shredding.



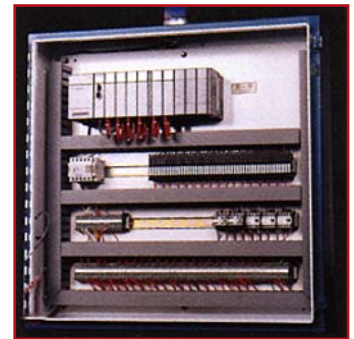
Self-adjusting trunnion-mounted cylinder ensures years of trouble-free use.



Auto-tier allows easy access to components for setup, lubrication and preventative maintenance.



"Pathfinder" Plus Touch Screen operator interface simplifies baler controls and troubleshooting.



Low-voltage control center separate from high-voltage on high horsepower machines.

SPECIFICATIONS

	5042	6042	7242
	Shear		
Feed Opening	49.5" x 40.5"	59.5" x 40.5"	71.5" x 40.5"
Charge Box Volume	62.3 cf	72.5 cf	84.7 cf
Horsepower	20 / 30 / Twin 20 / Twin 30		
Displacement (Dry)	8,825 - 26,135 cf/Hr	8,935 - 27,390 cf/Hr	9,030 - 28,595 cf/Hr
Main Cylinder	8" & 9"		
Compressing Force	150,795 # - 190,850 #		
Ram Face Pressure	85.5 PSI - 108 PSI		
Bale Size	43" w x 43" h x variable length (min. 20", max. 80")		

OTHER FEATURES:

"Pathfinder Plus" Color Touch Screen provides operator interface for efficient machine setup, diagnostics and changeover.

Five-tie auto-tier swings away from the baling unit for easy access to internal assemblies.

"Sharp 5X" replaceable floor liners with wear warranty.

Choice of eight standard power packs.

Manifold hydraulics designed for minimal maintenance

Totally enclosed fan cooled motors for operation in dusty, poorly ventilated areas.

Slick material tension chamber.

Built to all current ANSI and OSHA standards. 24-hour telephone hotline for service and technical support.